



Athlos Academy
ST. CLOUD

Athlos Academy Reopening Plan

2020-21

PARENT AND STUDENT GUIDE



Table of Contents

Commitments	3
Goals.....	4
Partnership	5
Health Screening	6
Face Coverings.....	7
Hygiene and Cleaning	8
Social Distancing	9
Front Office Procedures.....	10
Food Service.....	11
Instructional Models.....	12
Key Dates	13

Our Commitments

Why don't our plans mirror other districts' approaches? Every district is unique. While some options may work well for other districts based on their unique needs, the approaches chosen for Athlos Academy are best aligned to serving our students, families and community.

SAFETY - The health and safety of our students and staff is a top priority. Plans will reflect guidance from the CDC, Minnesota Department of Health, and Minnesota Department of Education.

FLEXIBILITY - We want to get back to doing what we do best – teaching and learning with students in person. However, plans will be developed to allow for a fluid response when moving between in-person and distance learning scenarios is necessary.

RESPONSIBILITY - Plans will consider what is fiscally responsible to our community considering the financial resources of Athlos Academy.

EQUITY - Our commitment to equity means programs and services will be in place at school – regardless of the scenario – to ensure that race, gender, class and disability will not predict students' success.

Our Goal

Considering the extraordinary circumstances related to COVID-19, one of Athlos Academy's primary goals for the 2020-21 school year will be safely reopening school. As directed by the state, planning will focus on three possible scenarios:

A full return of students for in-person learning.



A partial return of students with a blended approach that includes distance learning and in-person learning.



No immediate return of any students and a continuation of distance learning.



By no later than the week of August 25, Athlos Academy expects to announce specific guidance on how we will reopen September 8th, 2020.

Our Partnership

At Athlos Academy of St. Cloud, families are partners in the education and growth of their children. As Athlos holds students and staff to high standards, we also see the essential role of the child's family in their success in school.

This summer, families were asked to identify the method of instruction they wanted their children to attend: Distance Learning or On-Campus.



71%
chose the
On-Campus
model



29%
chose the
Distance Learning
model

As long as conditions allow, we plan to offer families a choice between the two models and best accommodate their families' needs.

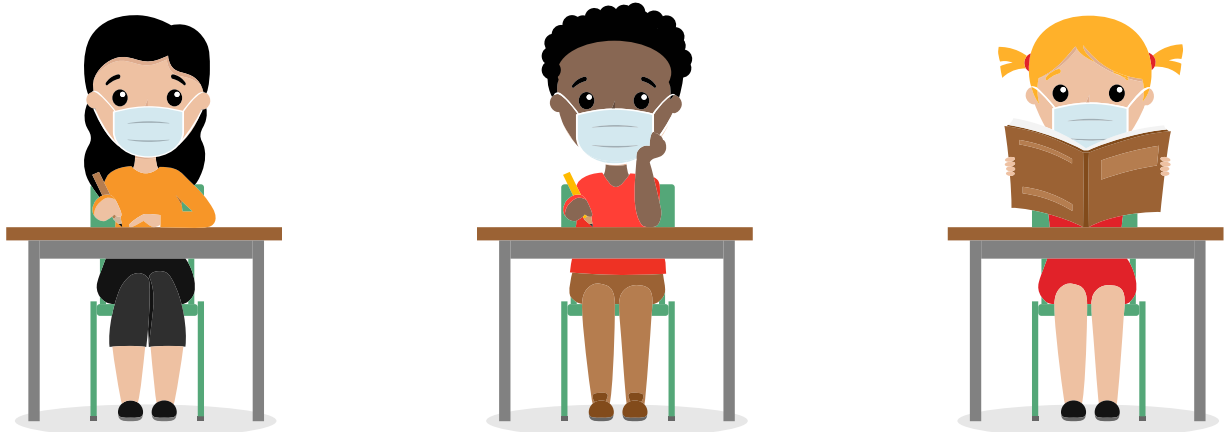
Health Screening

- Temperatures of students will be taken as they exit the bus or in their cars in Driveline.
- Late students will have their temperatures taken prior to exiting the car in front of the school.
- Temperatures will also be taken midway through the school day.
- **Students will be sent home if they have a temperature at or above 100.4 F.**
- **Siblings of these students will also be sent home as they may also be exposed.**
- A quarantine room will be established to hold students until parents arrive to pick them up.
- Staff will have their temperatures taken before reporting to work.
- Staff members will be sent home if they have a temperature at or above 100.4 F.
- Any confirmed COVID case will be reported to the public health department and handled and communicated according to their guidelines.



Face Coverings

On July 22, 2020, Governor Walz signed Executive Order 20-81, requiring face coverings in all indoor public spaces in Minnesota, including K-12 school buildings. Students must wear face coverings on the bus, as they enter the school, and in hallways and bathrooms. A face shield (a clear plastic barrier that covers the face) allows visibility of facial expressions and lip movements for speech perception and may be used as an alternative to a face covering in certain situations. Face coverings may be removed in classroom areas where six feet of social distancing is observed, during lunch and snack times, and if the student is outdoors for athletic movement class, music, or free play.



Hygiene and Cleaning

- Students will need to bring a clear water bottle or reusable water bottle to school that will be refilled from the classroom faucet. Water faucets will be turned off.
- Bathroom breaks will be scheduled by classroom. Social distancing will occur during these breaks and bathrooms will be sanitized throughout the school day.
- Students and staff will be required to wear masks during the school day and on the bus. Masks may be removed outside during free play and athletic movement.
- School supplies will not be shared.
- Each student's school supplies will be stored in baggies labeled with the student's name.
- Students will sanitize their hands throughout the school day.
- The school will be thoroughly cleaned and sanitized each evening.



Social Distancing

Classrooms will be arranged with the goal of creating as much space as possible between students.



Floor markers will be used to demonstrate 6 feet distance to ensure social distancing in the hallways.



Art and Music class will take place in the classroom or outdoors when possible. Singing will be discouraged unless class is outdoors.



Free Play will take place on the playground with social distancing requirements. Hand sanitizer will be used before and after Free Play.



If the athletic movement class is happening indoors, the gym curtains will be lowered to separate classes and activities will follow distancing guidance.



Front Office Procedures

No parents or visitors will be allowed into the school building.

Front doors will remain locked.

For student pick-up: Signage with school phone number will be displayed at front entrance. Front office personnel will answer the phone, contact the student's teacher and escort them to the car.

A drop off box will be located in the vestibule for items to be dropped off for students.

Parent meetings will be conducted via Zoom if possible.

No students can be dropped off before school at the front office before 8:15 a.m. All students who come to school via car prior to 8:15 a.m. will need use Driveline.

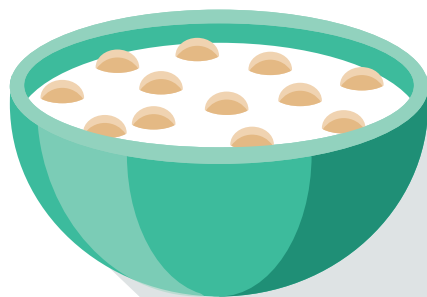
Food Service

Athlos Academy of St. Cloud has qualified for the Community Eligibility Provision (CEP). CEP allows eligible districts and/or schools in low income areas to provide school lunch and breakfast at no charge to all students.

Families will need to complete an Income Verification Form, which will be distributed once we receive it.

For safety, all students will eat breakfast and lunch in their classroom.

Breakfast and lunch will be available to pick-up for students who will be distance learning this school year.



Instructional Models

AASC may need to move between models based on positive COVID-19 cases within the city.

Students will have learning opportunities available each day in each of the scenarios. These may include activities like:

Recorded mini-lessons on content for the course



Teacher interaction with students using activities



Opportunities for peer-to-peer activities



Small-group meetings/activities throughout the day



Each student will have an engagement activity with their teachers on a regular basis.

Key Dates

August 24

School Board meeting presentation outlining reopening plans

September 2

Virtual Open House (9 a.m. or 2 p.m.)

September 8

First day of school, 2020-21





THANK YOU

